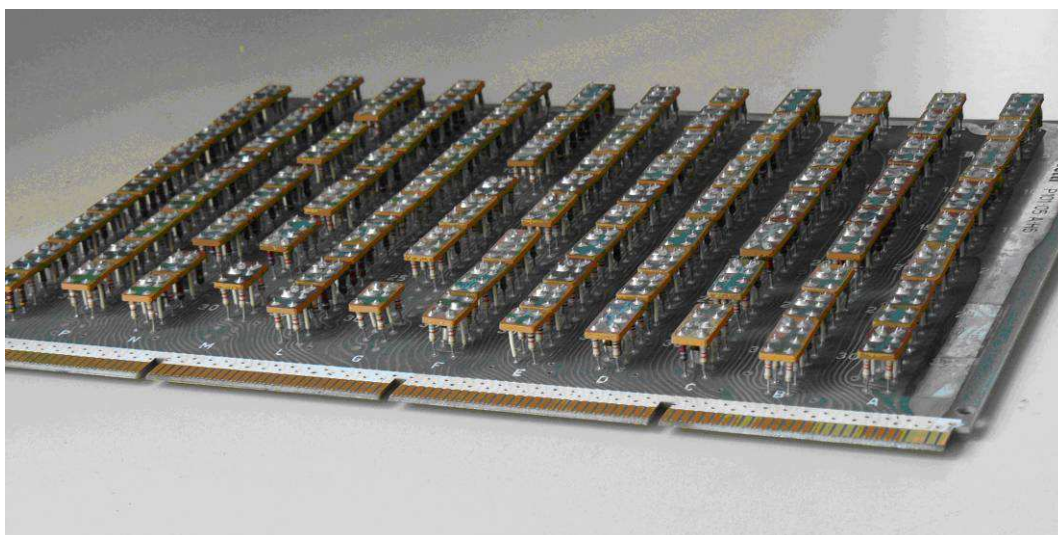


Raccolta Circuiti Elettrici



Sommario.

Avvertenza.....	3
P101 – Micromoduli.....	4
Logici N32,N36,N52	4
Derivatori – Maschere	5
Reti RC e Filtri.....	6
Reti di resistenze.....	7
Parti di circuiti composti.....	10
Circuiti complessi in cassettera.....	12
Amplificatore Cartolina	12
Cartolina – Monostabile OP.....	13
Cartolina – Monostabili OS.....	14
Cartolina – Oscillatore OR.....	15
Linea di ritardo – Scrittura.....	16
P101 - Temporizzazione – Oscillatore OT.....	17
P102 - Temporizzazione – Oscillatore OT.....	18
Circuiti attuazione.....	19
Spara Martello.....	19
Blocco Tastiera e Via Carrello	20
Alimentatore.....	21

Avvertenza.

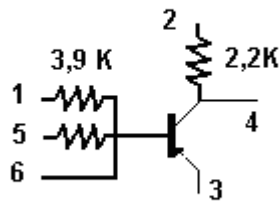
I circuiti qui raccolti sono derivati da ispezione visiva di micromoduli montati su piastre.

Date le condizioni di accessibilità e leggibilità, i valori dei componenti sono da ritenersi indicativi e da sottoporre a verifica.

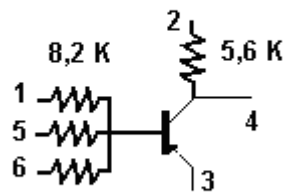
P101 – Micromoduli

Logici N32,N36,N52

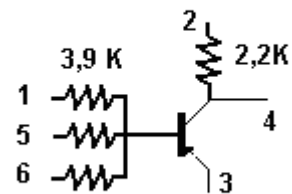
N20



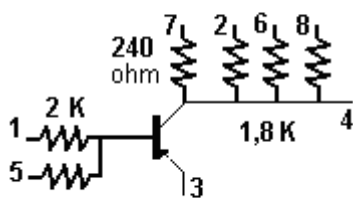
N30



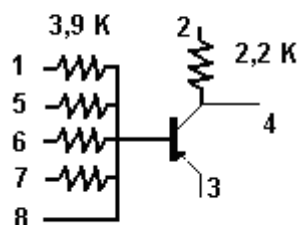
N31-N35



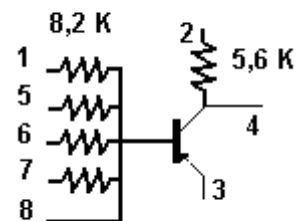
P20



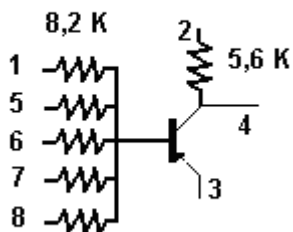
N40



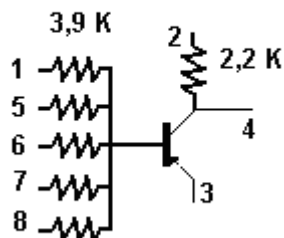
N41



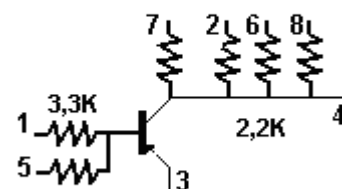
N50



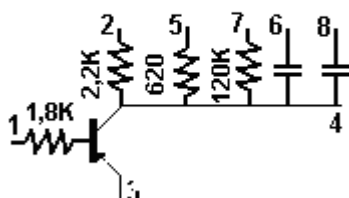
N51



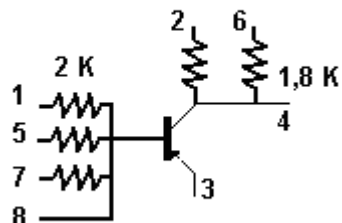
P21



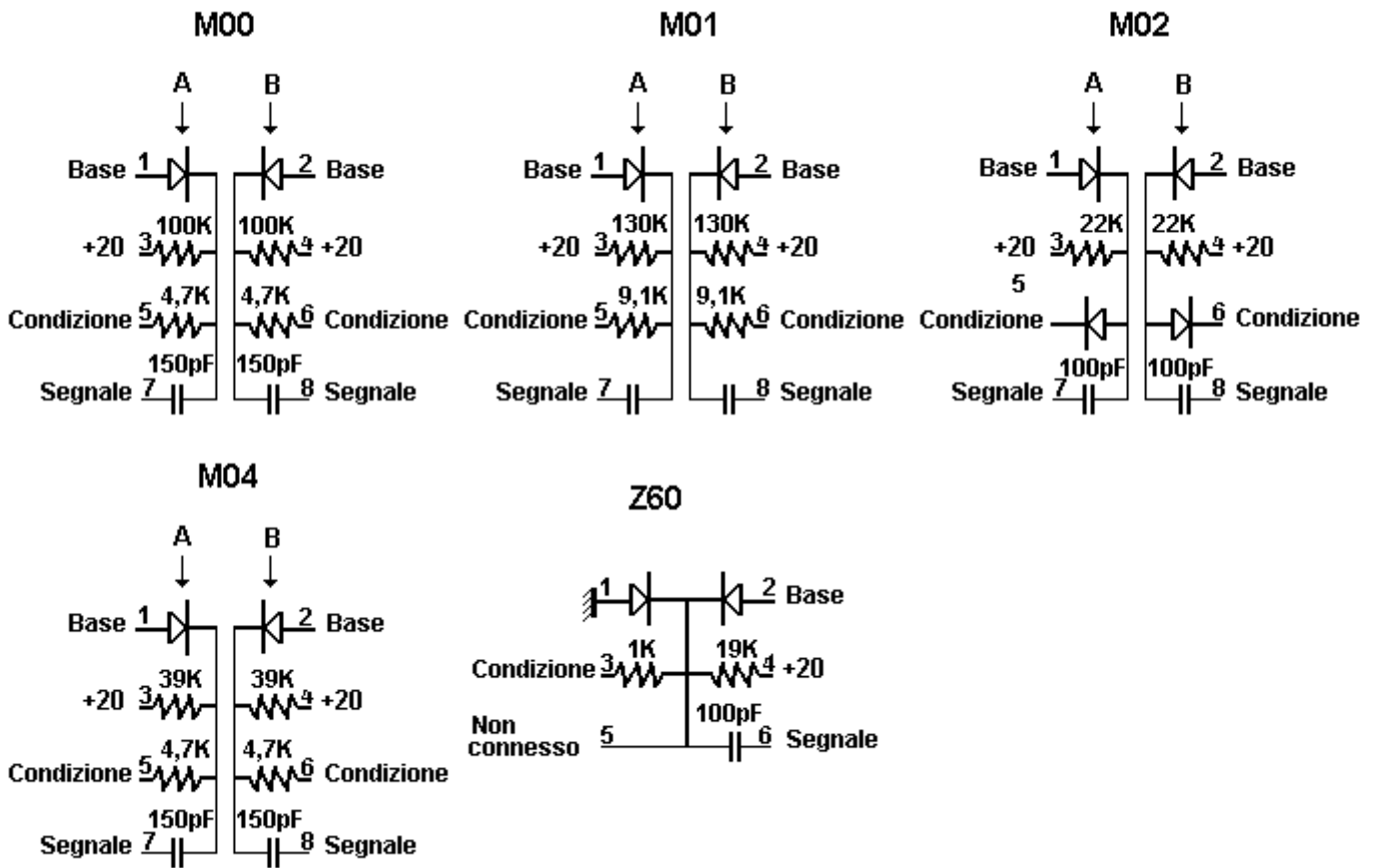
P22



P50

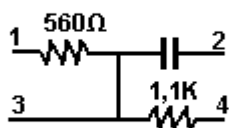


Derivatori – Maschere

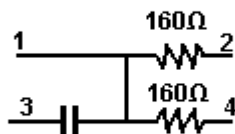


Reti RC e Filtri.

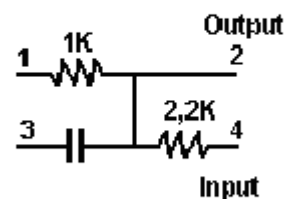
Z29



Z35



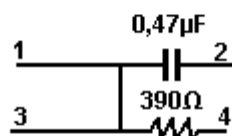
Z36



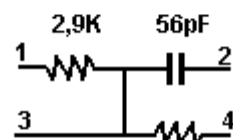
Z40



Z41



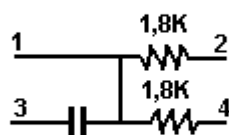
Z42



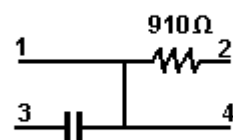
Z43



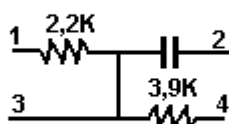
Z44



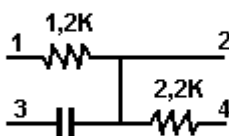
Z46



Z58



Z59

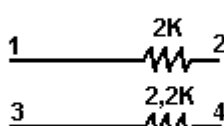


Reti di resistenze.

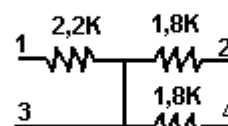
Z01



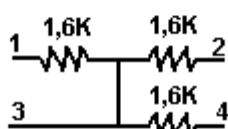
Z04



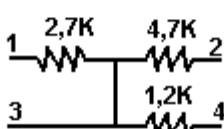
Z15



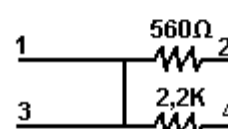
Z16



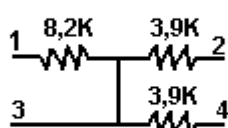
Z17



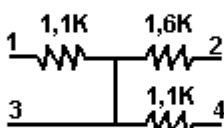
Z20



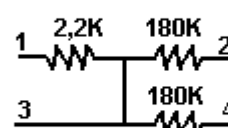
Z21



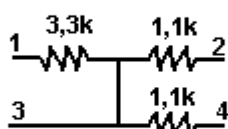
Z22



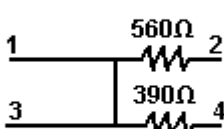
Z23



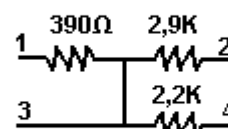
Z24



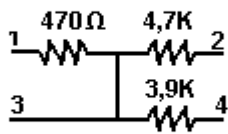
Z25



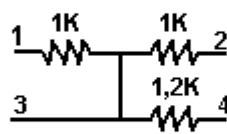
Z26



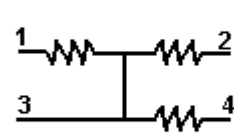
Z27



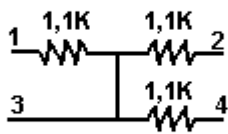
Z28



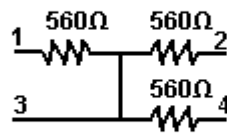
Z30



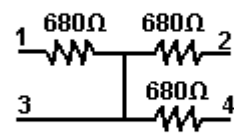
Z31



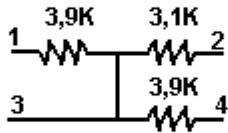
Z32



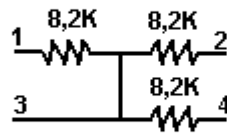
Z33



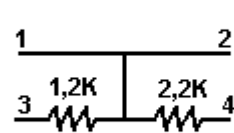
Z34



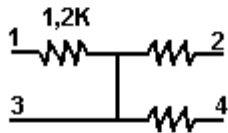
Z38



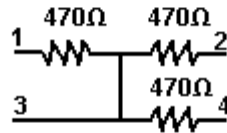
Z39



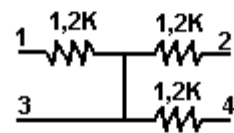
Z45



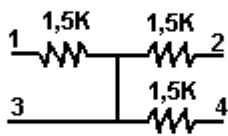
Z47



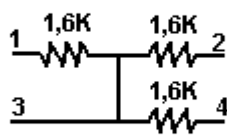
Z48



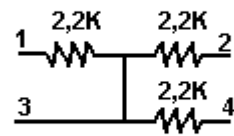
Z49



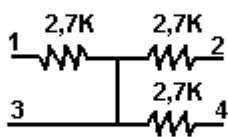
Z50



Z51



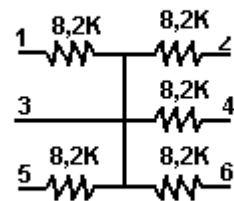
Z52



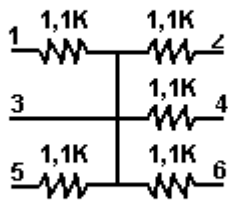
Z53



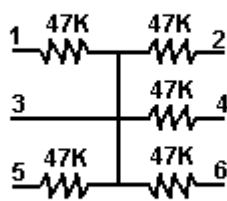
Z61



Z67

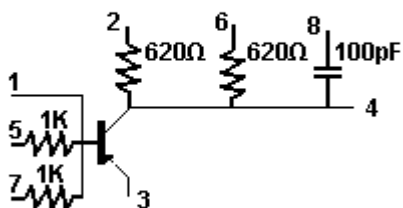


Z68

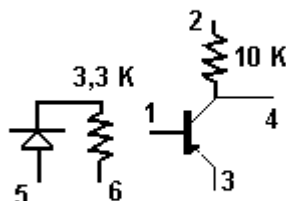


Parti di circuiti composti

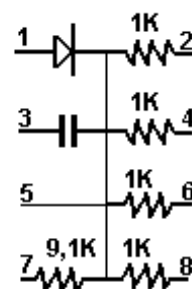
A01



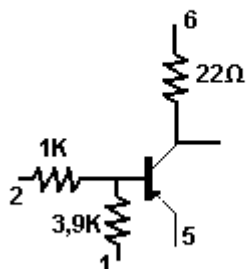
N32



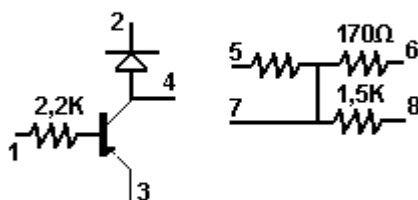
R01



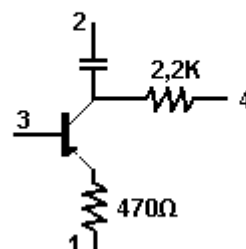
S01



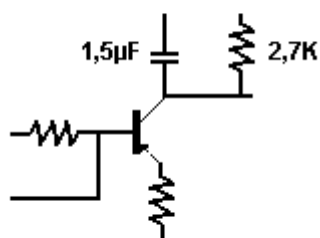
S02



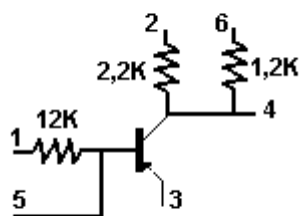
S03



S04



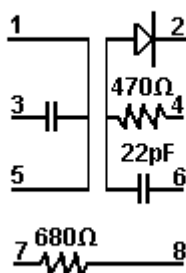
S05



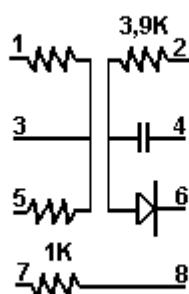
S06



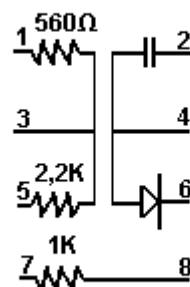
U01



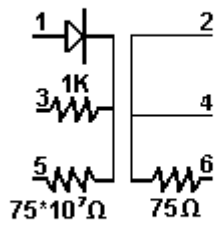
U02



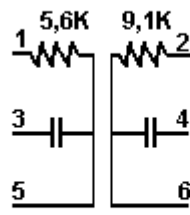
U03



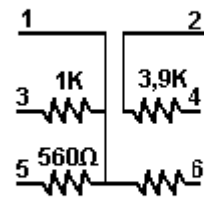
V02



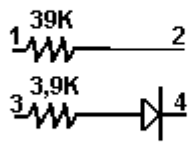
V04



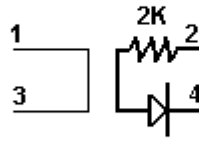
V05



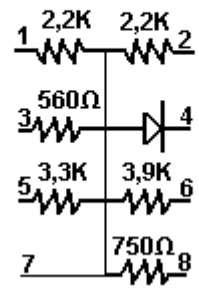
Z02



Z03

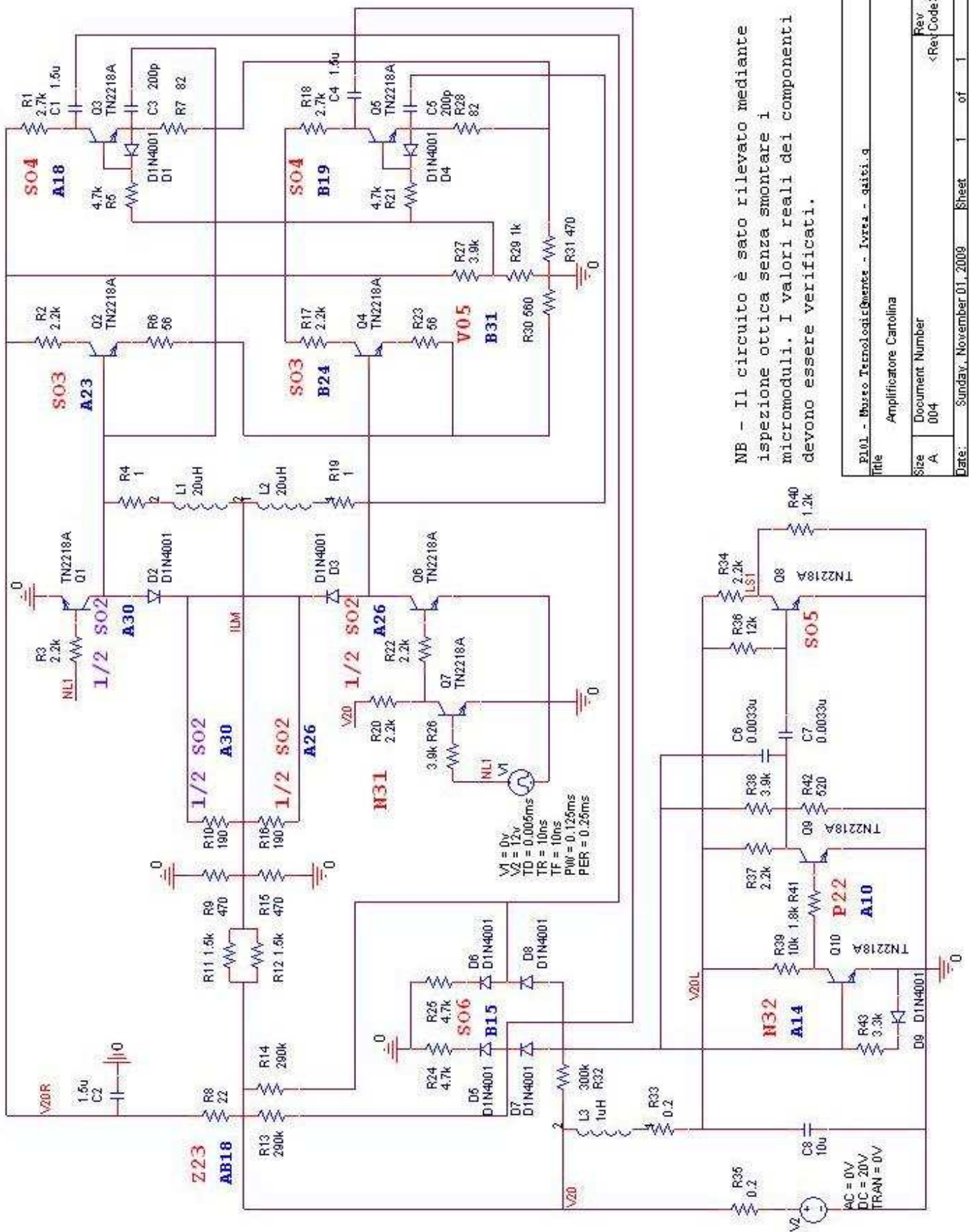


Z80



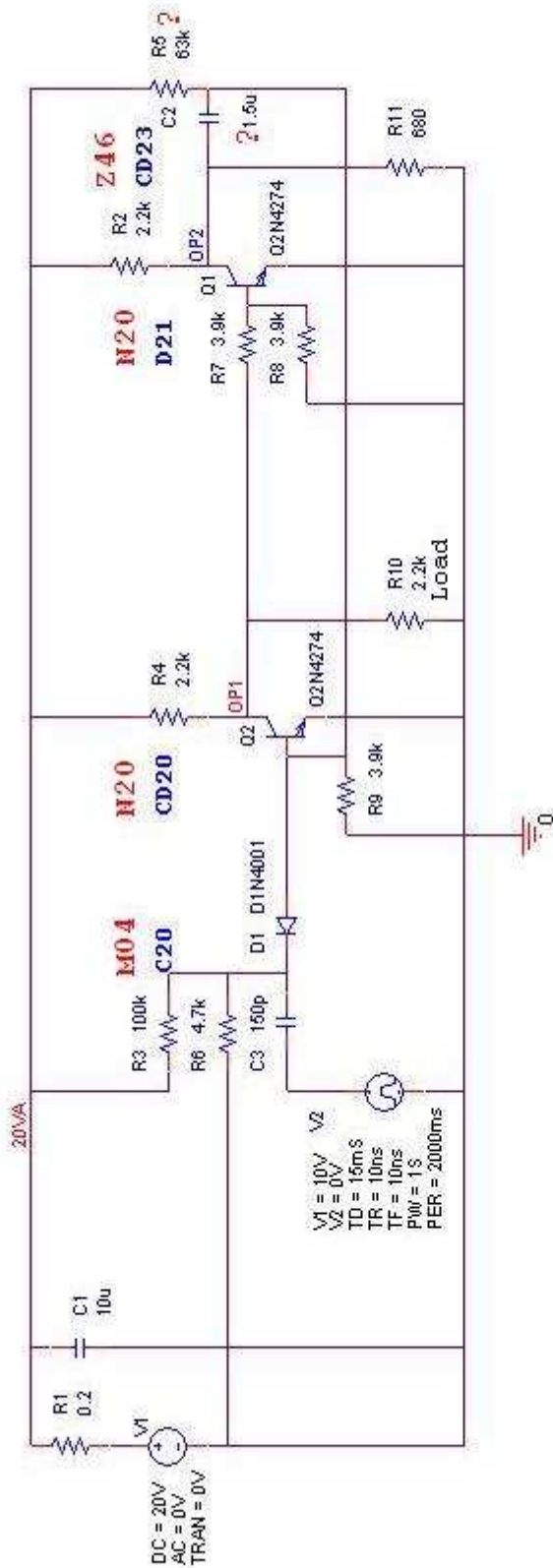
Circuiti complessi in cassetteria.

Amplificatore Cartolina



P101 - Museo TecnologicoQuercia - Ivrea - galiti.g	
Title Amplificatore Cartolina	
Size A	Rev <Rev Code>
Document Number 004	
Date: Sunday, November 01, 2009	Sheet 1 of 1

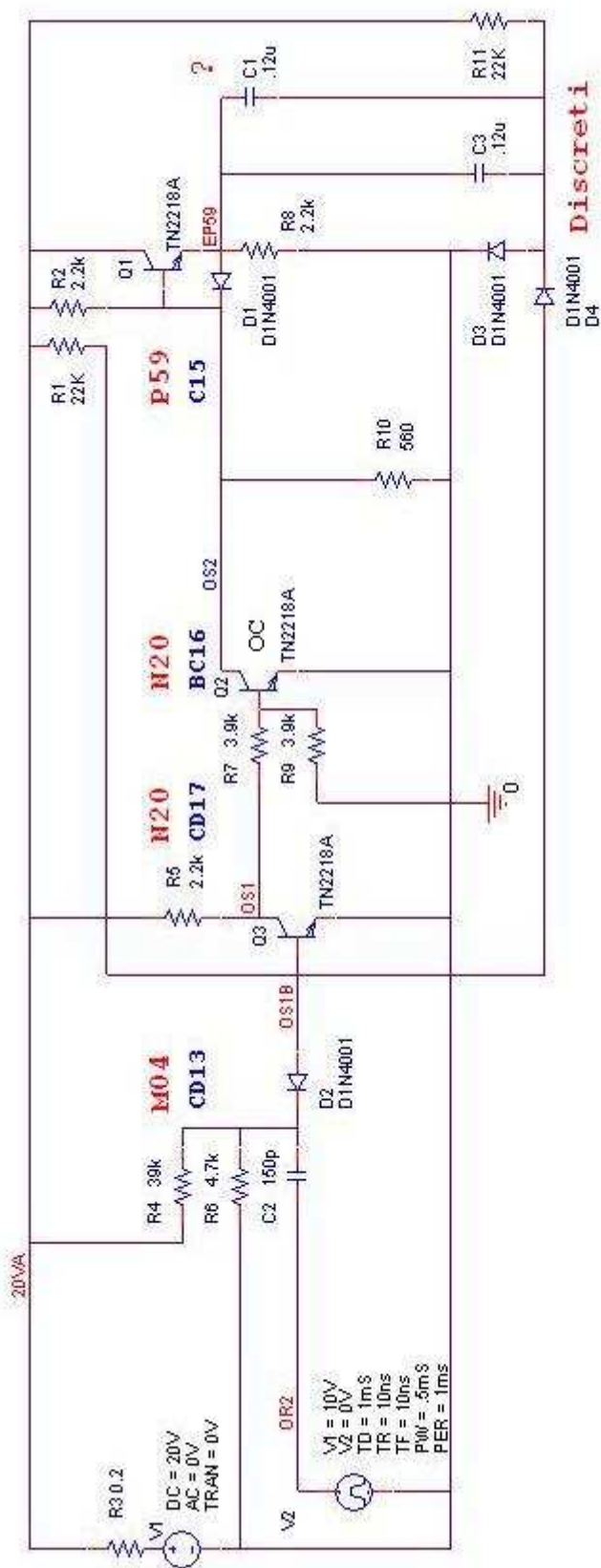
Cartolina – Monostabile OP



NB - Il circuito è stato rilevato mediante ispezione ottica senza smontare i micromoduli. I valori reali dei componenti devono essere verificati.

P101 - Museo TecnologicoMente - Ivrea - gaibi.g	
Title Monostabile Op	
Size A	Rev <Rev Code>
Document Number 006	
Date: Sunday, November 01, 2009	Sheet 1 of 1

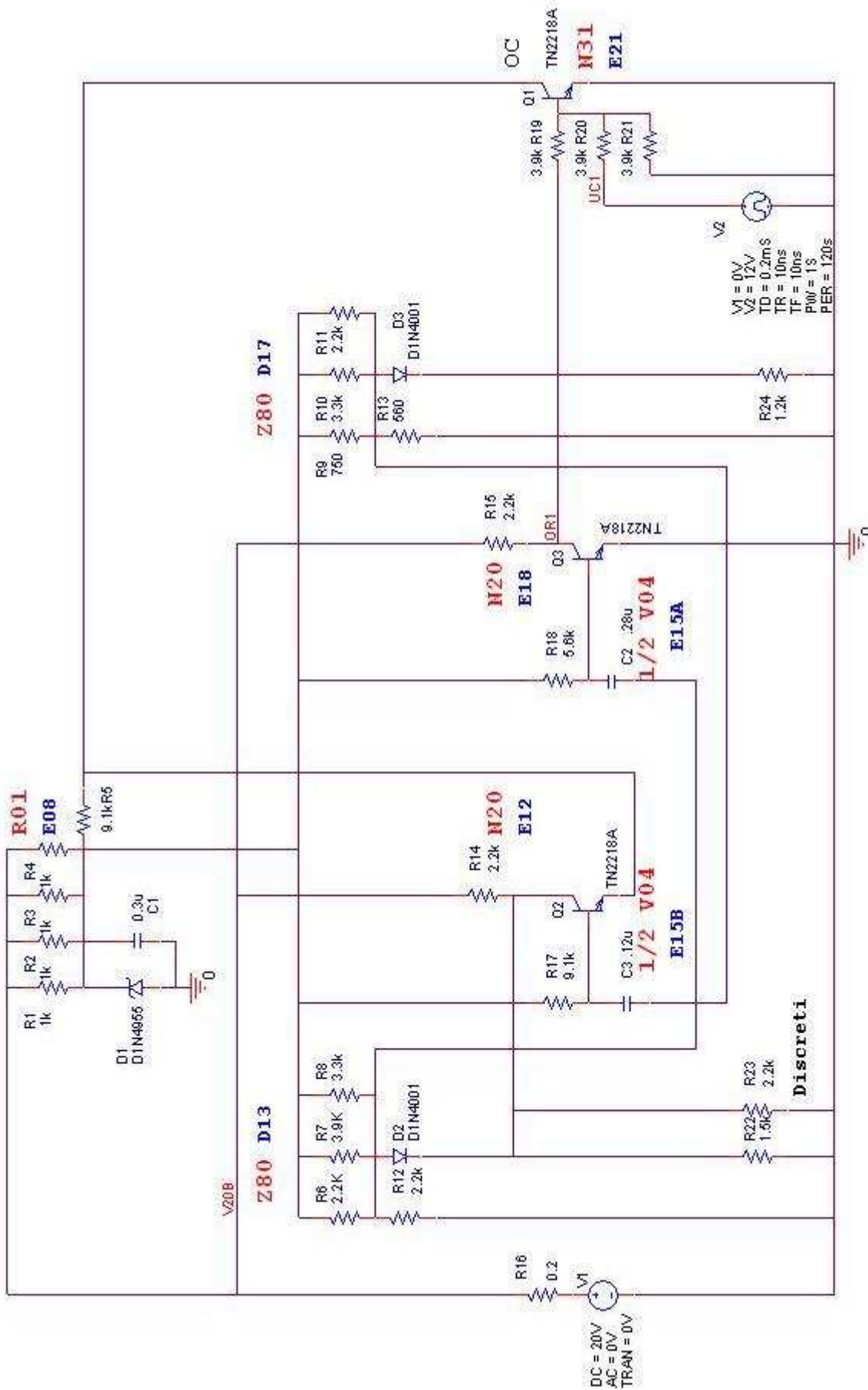
Cartolina - Monostabili OS



NB - Il circuito è stato rilevato mediante ispezione ottica senza smontare i micromoduli. I valori reali dei componenti devono essere verificati.

P101 - Museo Tecnologic@mente - Ivrea - gaiti.g	
Title Monostabile OS - P102	
Size A	Document Number 008
Date: Sunday, November 01, 2009	Sheet 1 of 1
	Rev

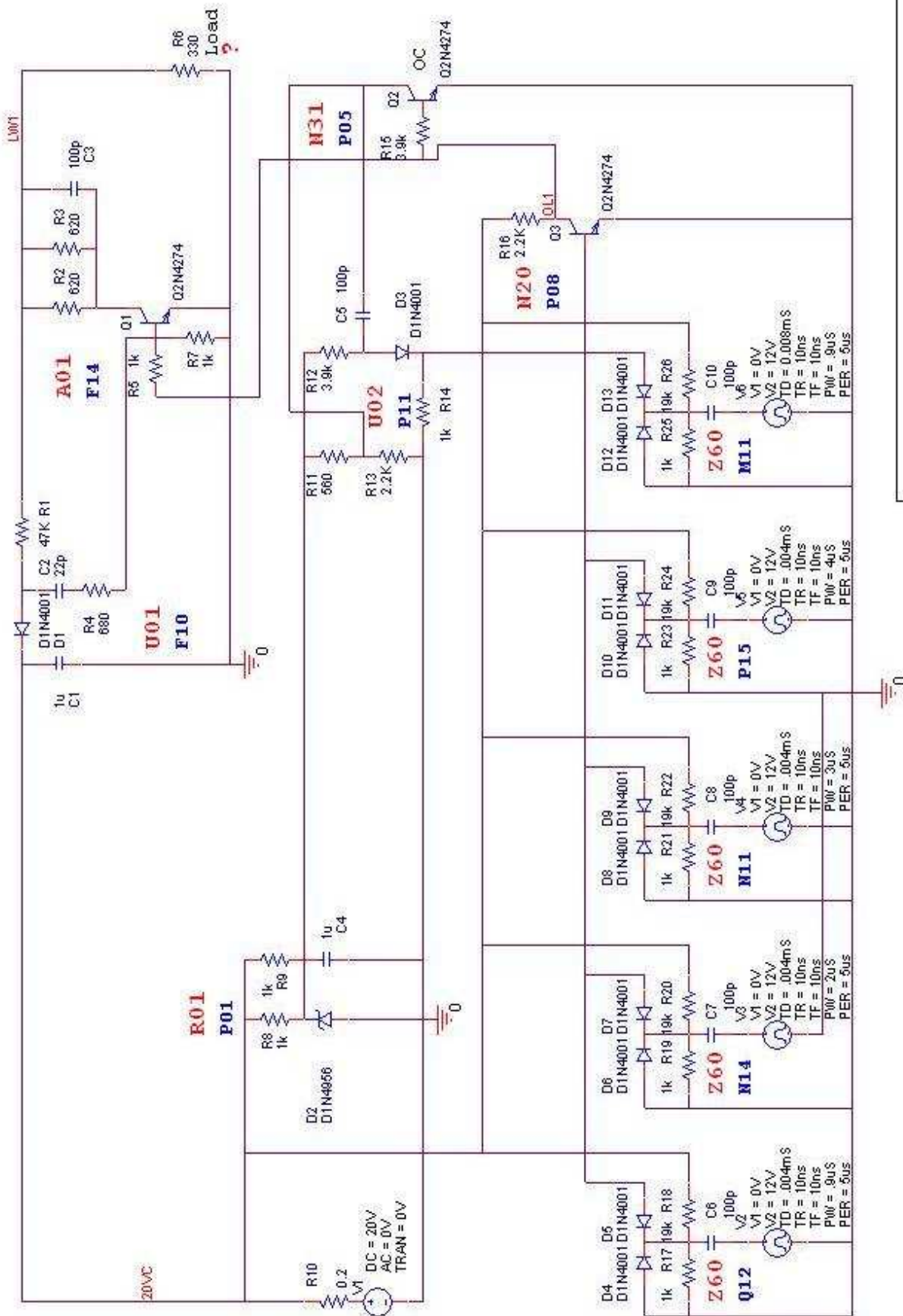
Cartolina - Oscillatore OR



NB - Il circuito è stato rilevato mediante ispezione ottica senza smontare i micromoduli. I valori reali dei componenti devono essere verificati.

P101 - Museo Tecnologicamente - Ivrea - gaiti.g	
Title Oscillatore OR - P102	
Size A	Document Number 007
Date Sunday, November 01, 2009	Sheet 1 of 1
Rev	

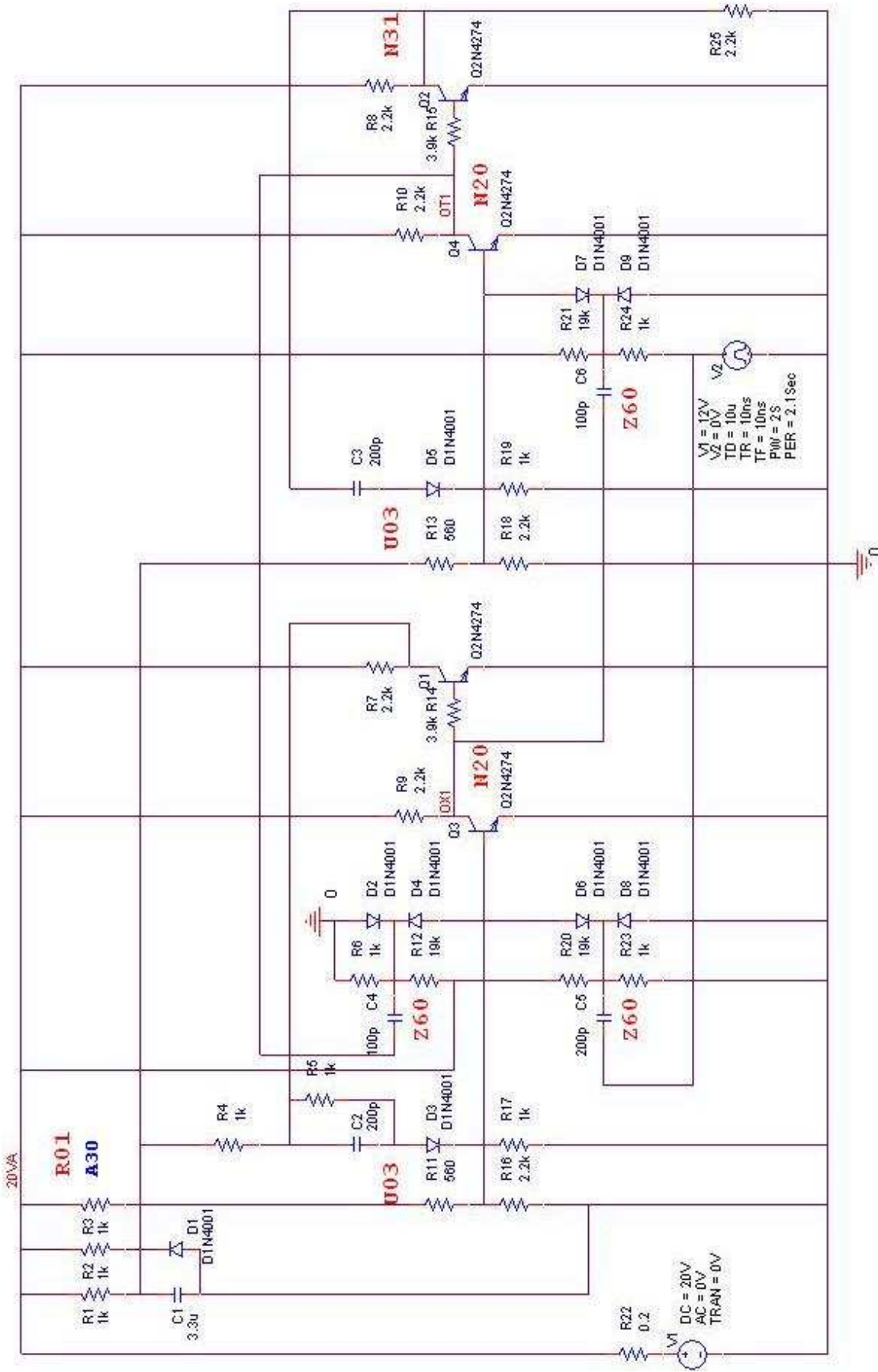
Linea di ritardo – Scrittura



NB - Il circuito è stato rilevato mediante ispezione ottica senza smontare i micromoduli. I valori reali dei componenti devono essere verificati.

P101 - Museo Tecnologicamente - Ivrea - gaiti.g	
Title P102 - Scrittura Linea di Ritardo - 011 - L001	
Size A	Document Number 006
Rev <Rev Code>	
Date: Sunday, November 01, 2009	Sheet 1 of 1

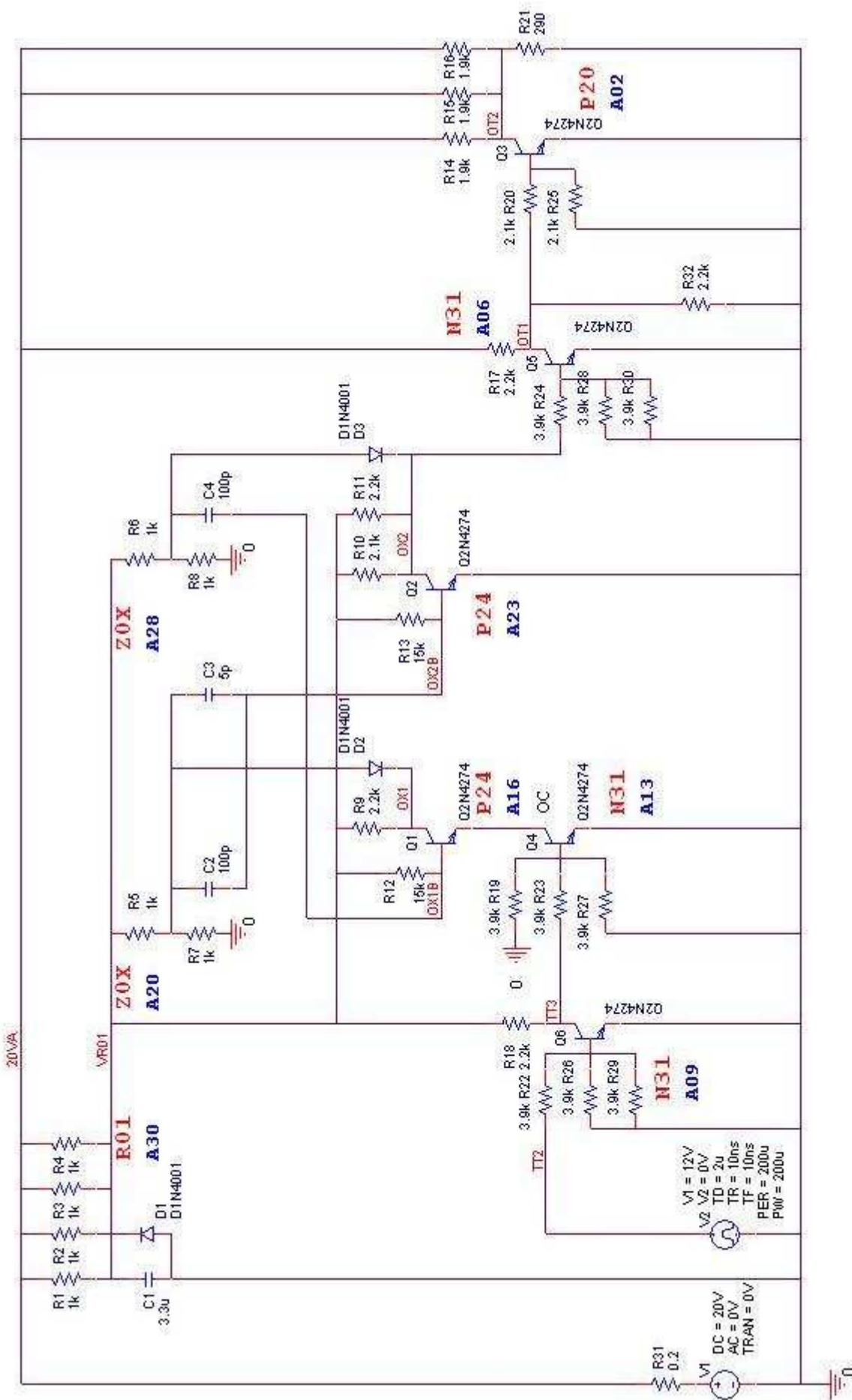
P101 - Temporizzazione - Oscillatore OT



NB - Il circuito è stato rilevato mediante ispezione ottica senza smontare i micromoduli. I valori reali dei componenti devono essere verificati.

P101 - Museo TecnologicoBente - Ivrea - qaici.g	
Title Oscillatore OT	
Size A	Document Number 009
Date: Friday, October 30, 2009	Sheet 1 of 1

P102 - Temporizzazione - Oscillatore OT

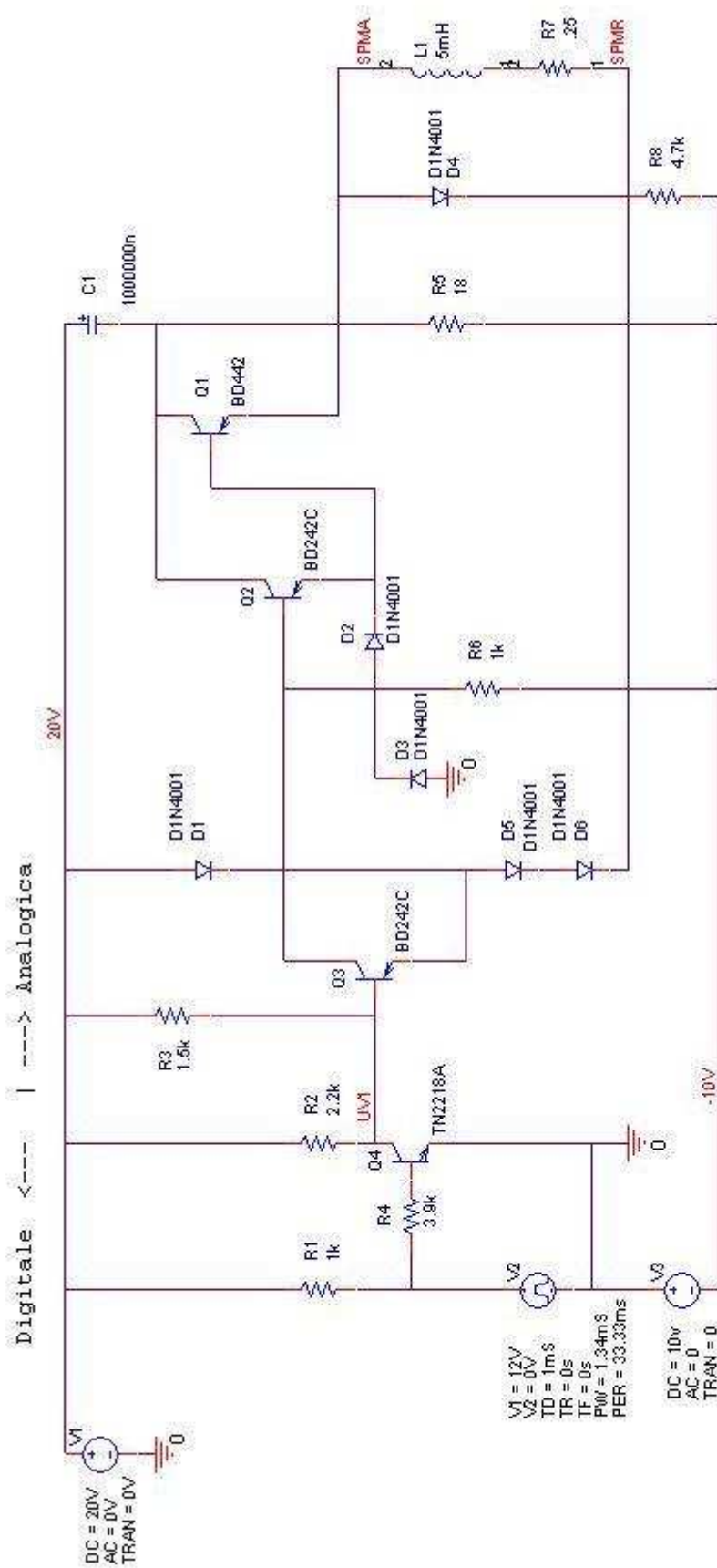


NB - Il circuito è stato rilevato mediante ispezione ottica senza smontare i micromoduli. I valori reali dei componenti devono essere verificati.

P101 - Museo Tecnologicamente - Ivrea - qaiti.g	
Title Oscillatore OT - P102	
Size A	Document Number 009
Date: Sunday, November 01, 2009	Sheet 1 of 1

Circuiti attuazione.

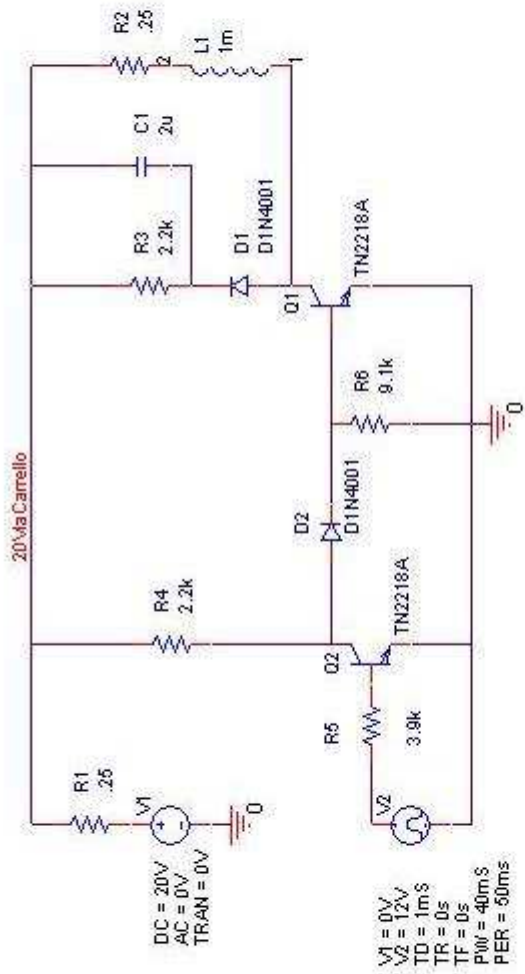
Spara Martello



NB - Il circuito è stato rilevato mediante ispezione ottica senza smontare i micromoduli. I valori reali dei componenti devono essere verificati.

P101 - Museo Tecnologicamente - Ivrea - qatbi.g	
Title Spara Martello	
Size A	Document Number <RevCode>
Date: Thursday, October 22, 2009	Sheet 1 of 1

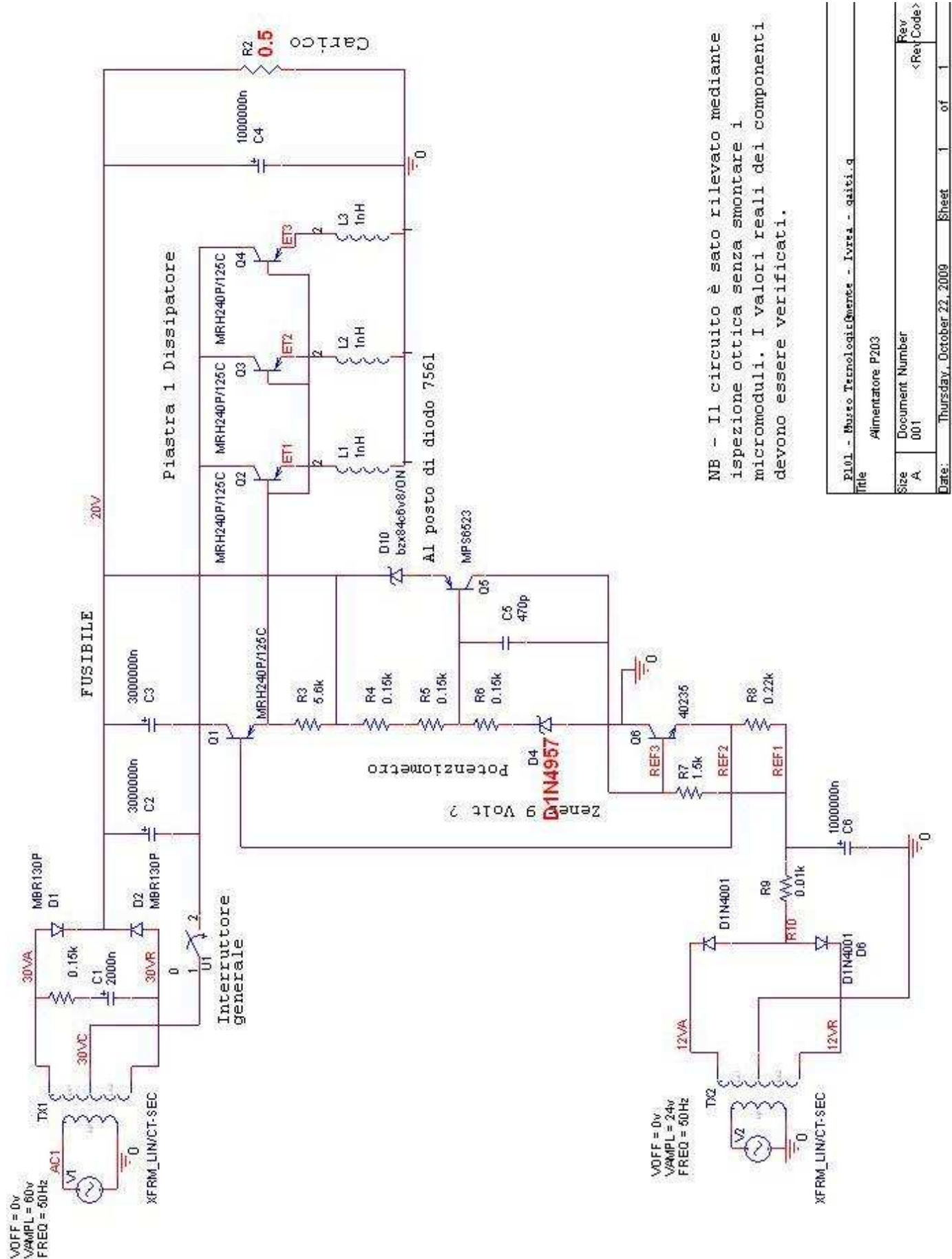
Blocco Tastiera e Via Carrello



NB - Il circuito è stato rilevato mediante ispezione ottica senza smontare i micromoduli. I valori reali dei componenti devono essere verificati.

PL01 - Museo Tecnologico@ente - Ivrea - qaivi.g	
Title Blocco tastiera - Via carrello	
Size A	Document Number <Rev Code>
Date: Thursday, October 22, 2009	Sheet 1 of 1

Alimentatore.



NB - Il circuito è stato rilevato mediante ispezione ottica senza smontare i micromoduli. I valori reali dei componenti devono essere verificati.

Title		PI01 - Museo Tecnologicamente - Ivrea - qaiti.d	
Alimentatore P203			
Size	Document Number	Rev	<Ret Code>
A	001		
Date:	Thursday, October 22, 2009	Sheet	1 of 1